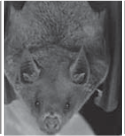




INSTALLATION MANUAL

*Nature's Way to fight mosquitoes
and the West Nile Virus*



LOCATION

deciding where to mount your bat house

Your success in attracting bats will be affected by the location you choose for your bat house. Bats choose natural roosting places based on a number of factors. The better you meet their requirements, the more likely it is they will choose your bat house.

SURFACE

A bat house mounted on the side of a building will retain heat better and will be better protected from predators. A bat house on a pole will also provide protection and give you more options for placement. Research shows that houses installed on metal-sided buildings tend to work very well due to the heat absorbed by the metal. To provide bats with easy access, trim branches away from your bat house when installing on a tree.

HEIGHT

Bats are vulnerable while sleeping. They choose nesting locations high off the ground to reduce the risk of predators' attacks, so be sure to mount your bat house at least 12 feet off the ground.

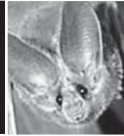
SUNLIGHT AND TEMPERATURE

The amount of sunlight your bat house needs will depend on your local climate. If you live in an area where the average high temperatures for July are less than 80°F (26°C) your bathouse should receive at least 10 hours of sun daily. If you live in an area where the average high temperatures for July are less than 100°F (38°C), your bathouse should receive at least 6 hours of sun daily.

TIMING

Bat houses are more likely to be used during their first summer if the bats arrive in the spring to find them already installed. The sooner you install your bat house, the sooner the bats will find it.

If you are planning to evict bats from a building, install the bat house two to six weeks before you move them out.



INSTALLING YOUR BAT HOUSE

HARDWARE: (included)

- 1 x Mounting brackets
- 1 x 4" Galvanized nail
- 4 x 4" Wood Screws

TOOLS REQUIRED:

- Hammer;
- Robertson screw-driver (#8) or
- Cordless Drill w/#8 Robertson bit

Whether you have chosen to install your bat house on a building or to pole-mount, place your nail where you intend the top hole of the mounting bracket to fit and hang the bat house from it (Figure 1, Step 1).

With the weight of the bat house supported by the nail, secure the bat house to the wall or pole with two screws in the mounting bracket (Figure 1, Step 2).

Complete the installation by placing the remaining 2 screws in the pre-drilled holes located on the "Landing Pad" (Figure 2, Step 3) and affix the bottom of the bat house to the mounting location (see orientation diagrams).

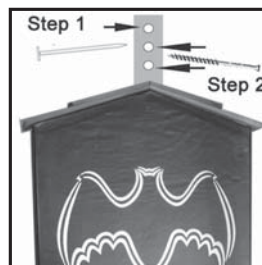


Figure 1

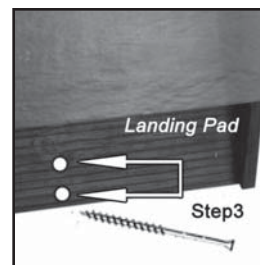


Figure 2

Visit canadianbathouses.com/install.htm for more INSTALLATION IDEAS



South-facing under-eave mount



Pole mount over roof



Tree-mount - trimmed branches



Chimney mount

MAINTAINING YOUR BAT HOUSE IN GOOD REPAIR

Your bat house carries a 20 year warranty against air and water leakage and is designed to last for 30 to 50 years. It should not require paint or resurfacing for any reason other than cosmetic, and should weather attractively.

www.canadianbathouses.com